

# DISCOVER CARD CONTROL MANAGEMENT THAT BLENDS SIMPLICITY AND ENGAGEMENT

## FIS® CardMod

Cardholders are demanding greater card control and better insights into their spending. In a digital world, cardholders want a premier card experience that includes self-serving capabilities that lead to stronger engagement and intrinsic financial controls.



## CARDHOLDER PREFERENCES AND BEHAVIORS CHANGE. BUILD BOLD FINANCIAL TECHNOLOGY THAT POWERS CHANGE.



Financial institutions need to rethink their digital card experience and expand their digital offerings so they can offer convenience and ultimate flexibility for a premier cardholder experience.

It shouldn't be hard to find a partner who offers a card controls solution that can advance your digital experience.

## Introducing FIS CardMod



CardMod empowers cardholders to control, monitor and manage card usage from their phone – giving them the power and full range of card control capabilities, including the ability to manage their cards anywhere and anytime, analyze/control spending and prevent fraud.

To help drive a digital-first experience, CardMod is a feature-rich, all-in-one application that attracts, retains and grows a financial institution's cardholder base all while giving them the power to seamlessly manage their financial card and payment set.

Based on your financial institution's digital strategy, you can choose your delivery channel from standalone app to API, which keeps your institution connected and allows for quick integrations and solution updates.

## CardMod PROVIDES RICH CARD-USAGE EXPERIENCES TO YOUR CUSTOMERS.



### Acquire and manage

Enable your cardholders to add and manage their cards anywhere and anytime

### Protect

Allow your cardholders to protect themselves from fraud through card, merchant and transaction controls

### Key features

- ✓ Freeze/unfreeze card
- ✓ Add/remove cards
- ✓ Share a card
- ✓ Shake-to-pay to override controls
- ✓ Turn on/off transaction types
- ✓ Set spend limits
- ✓ Transaction alerts
- ✓ Set location-based controls
- ✓ Turn-on region-shield
- ✓ Block merchant
- ✓ Trust/block merchant categories

### Cardholder benefits



#### Ease of use –

A single app to manage all your institution's cards



#### Total control -

Manage card settings and limits, and set boundary conditions for usage



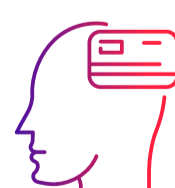
#### Card sharing -

Share cards with family members and friends while having complete control over usage

### Financial institution benefits



**Ease of setup and configuration** through Administrative Suite control center



**Increase customer stickiness** through ongoing engagement with the app



**Instant support, insights and monitoring** through the back office

## BUILT FOR BOLD. FINANCIAL TECHNOLOGY FOR BOLD IDEAS.